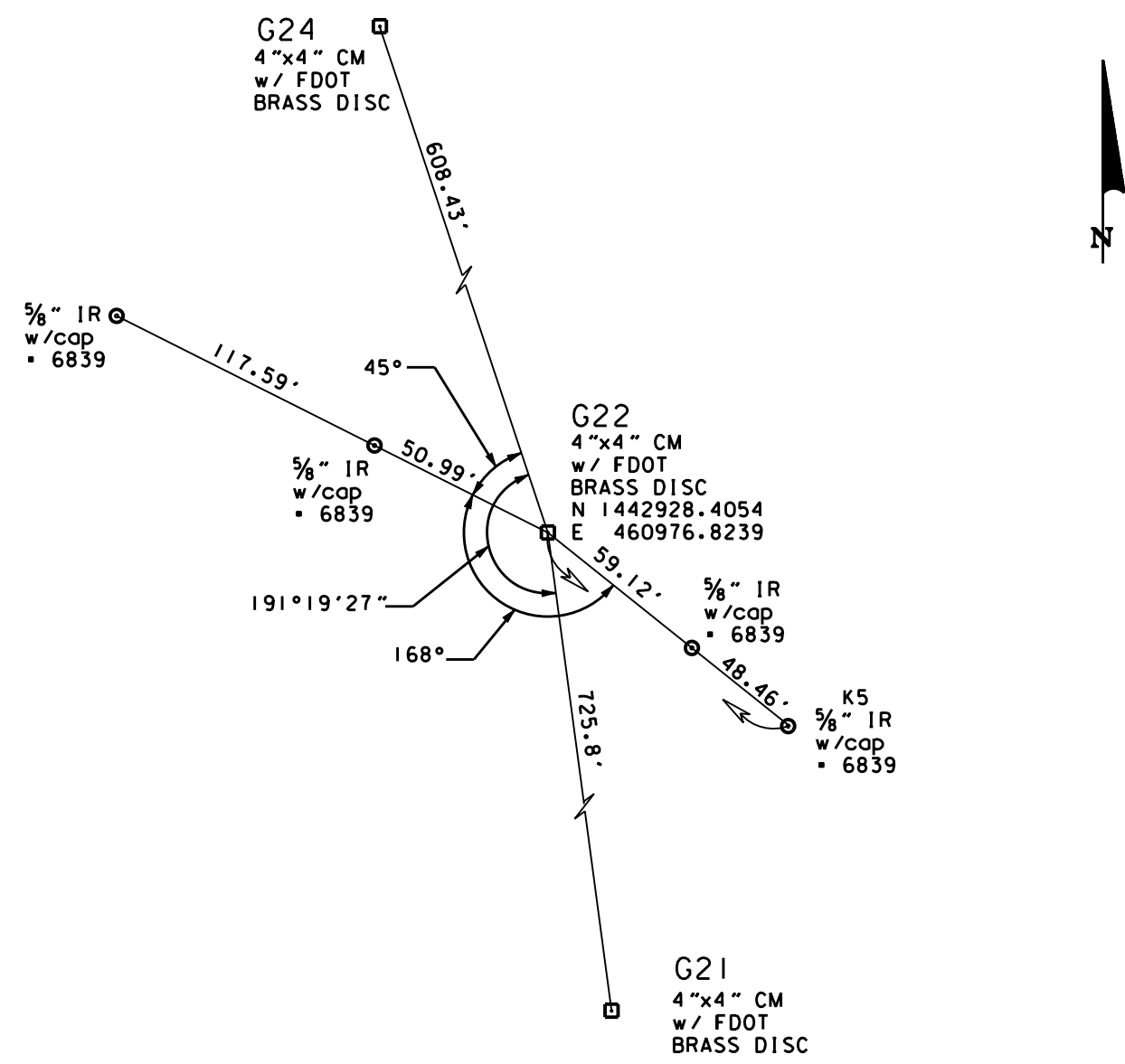
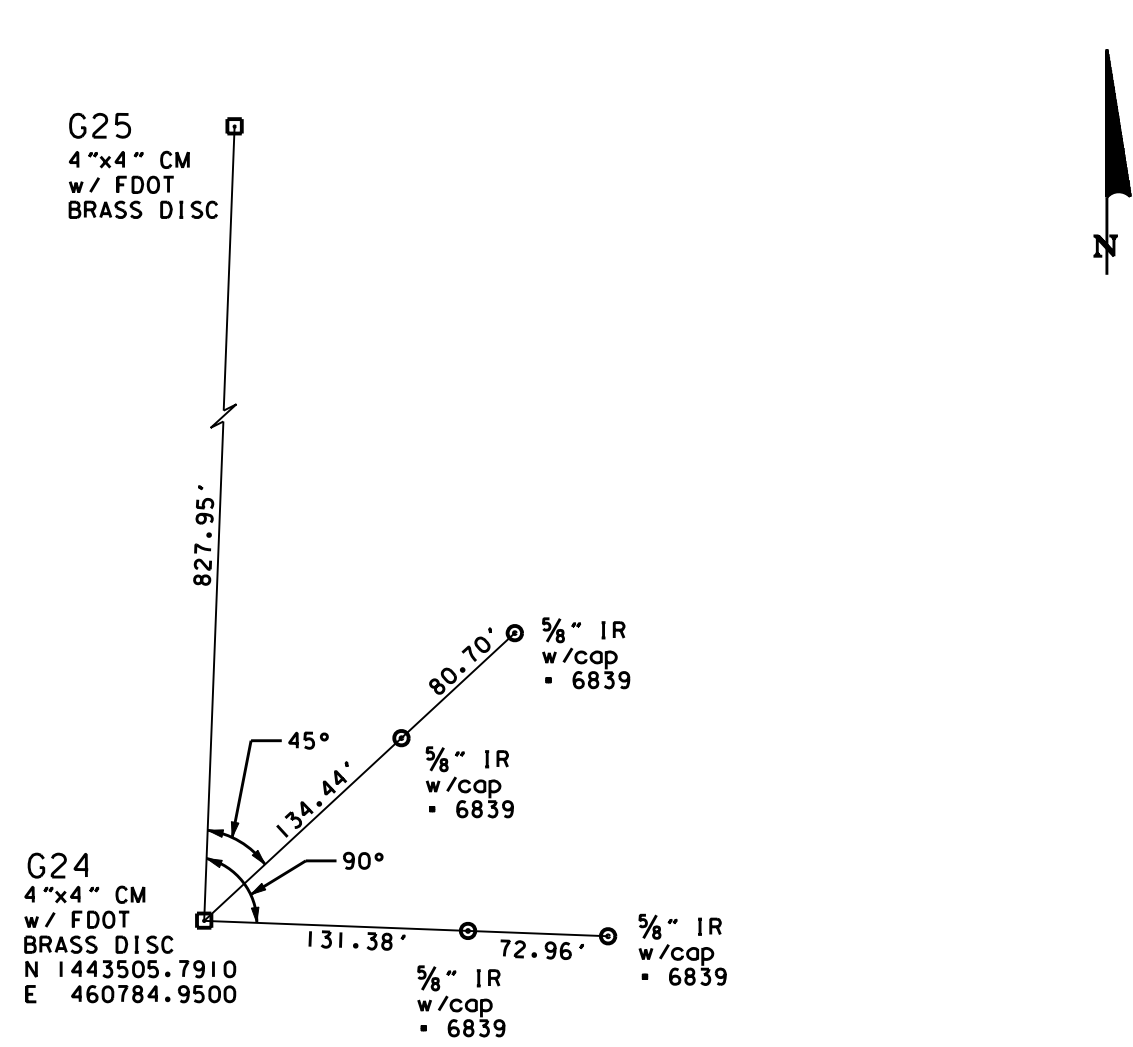


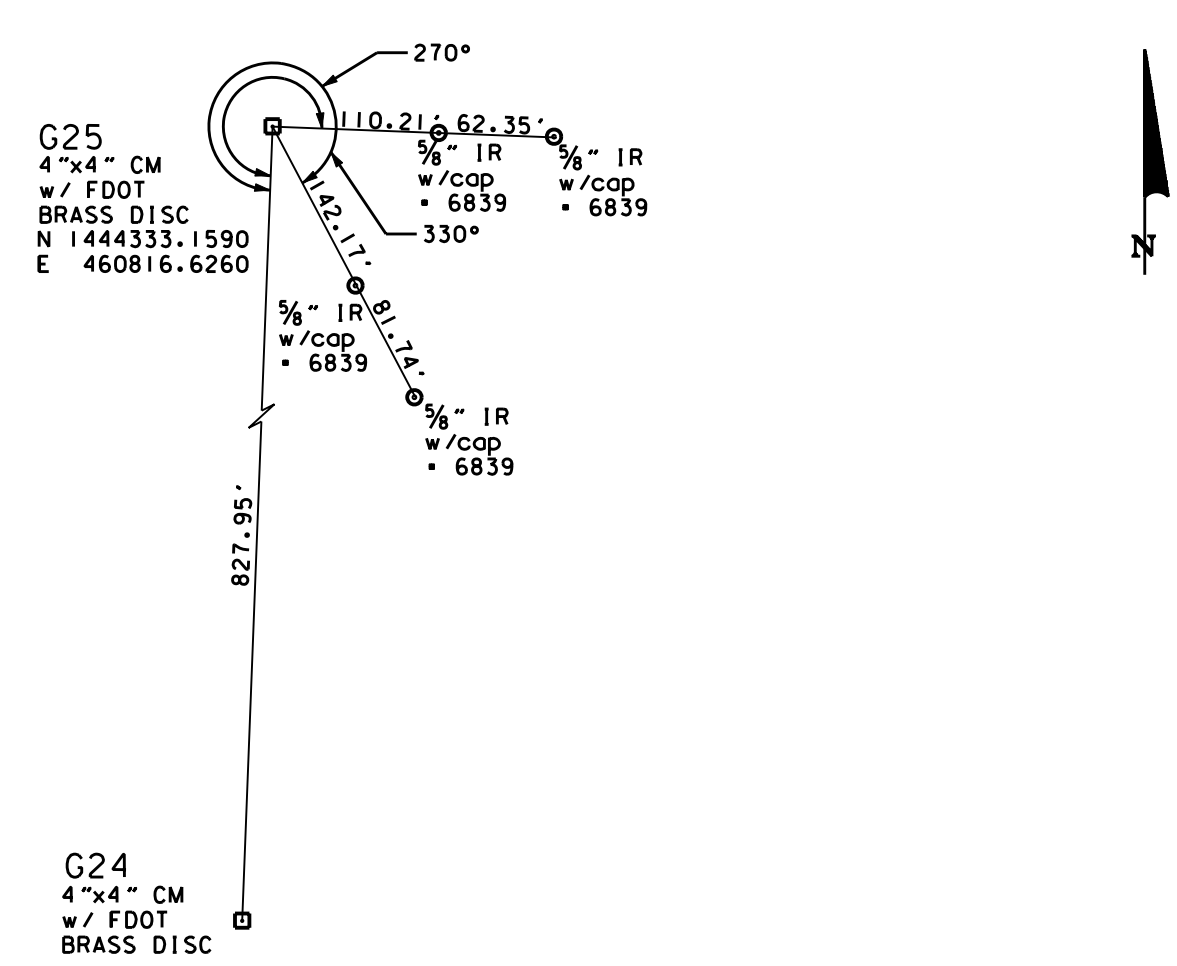
Control Point G21
STA. 127+91.71, offset 258.30' RT.
⊟ S.R. 429 (Western Beltway)



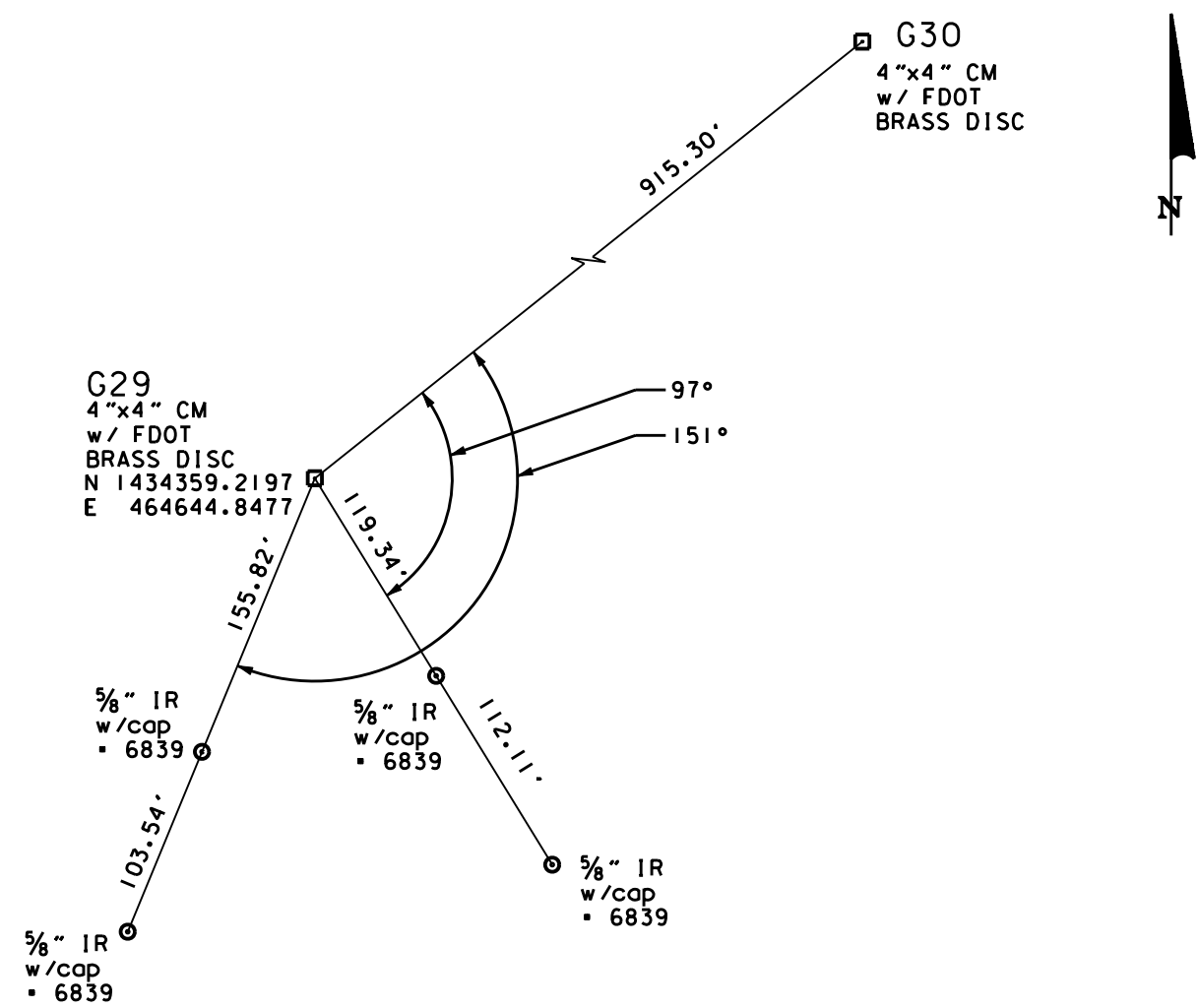
Control Point G22
STA. 135+77.36, offset 189.56' RT.
⊟ S.R. 429 (Western Beltway)



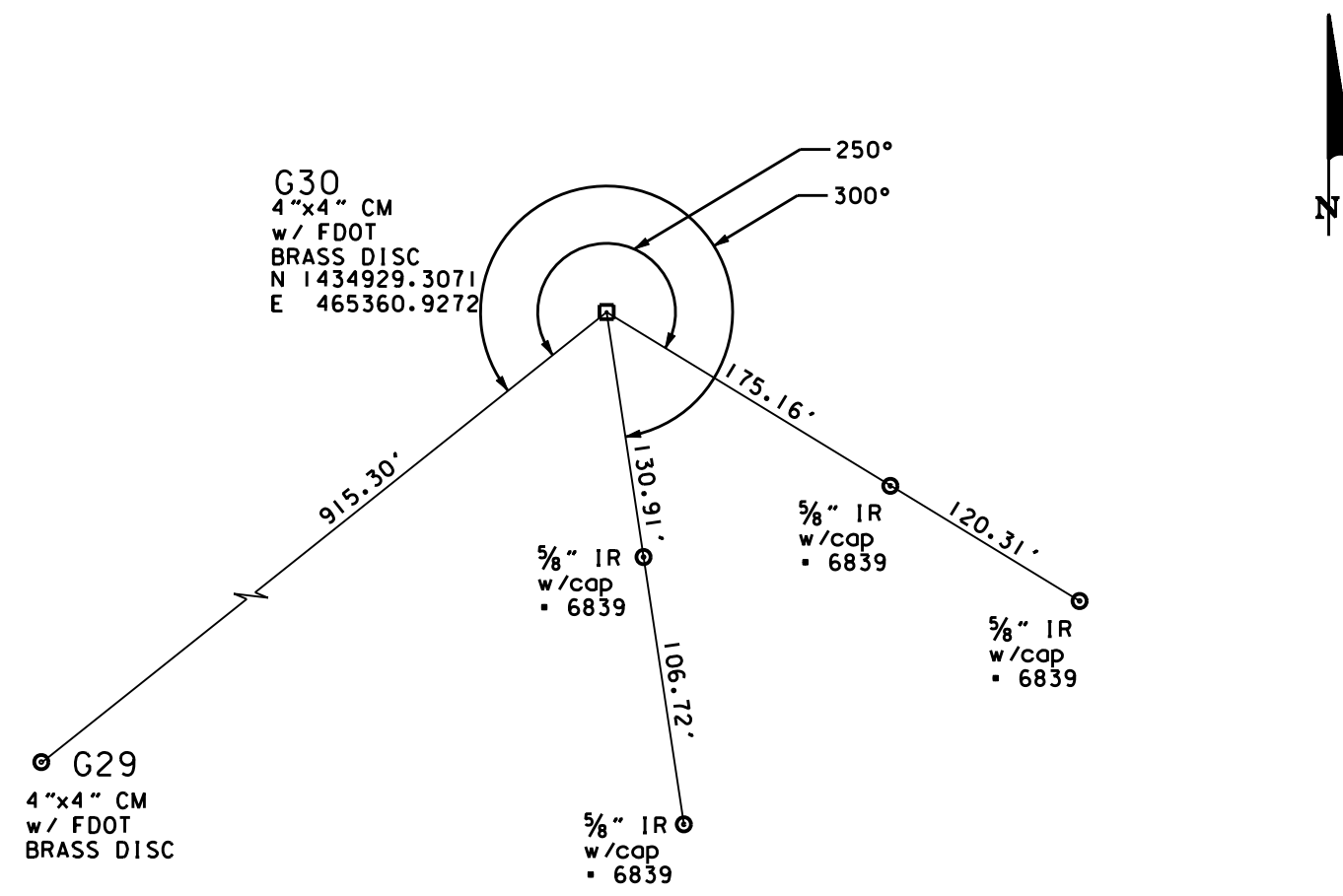
Control Point G24
STA. 142+12.97, offset 101.44' RT.
⊟ S.R. 429 (Western Beltway)



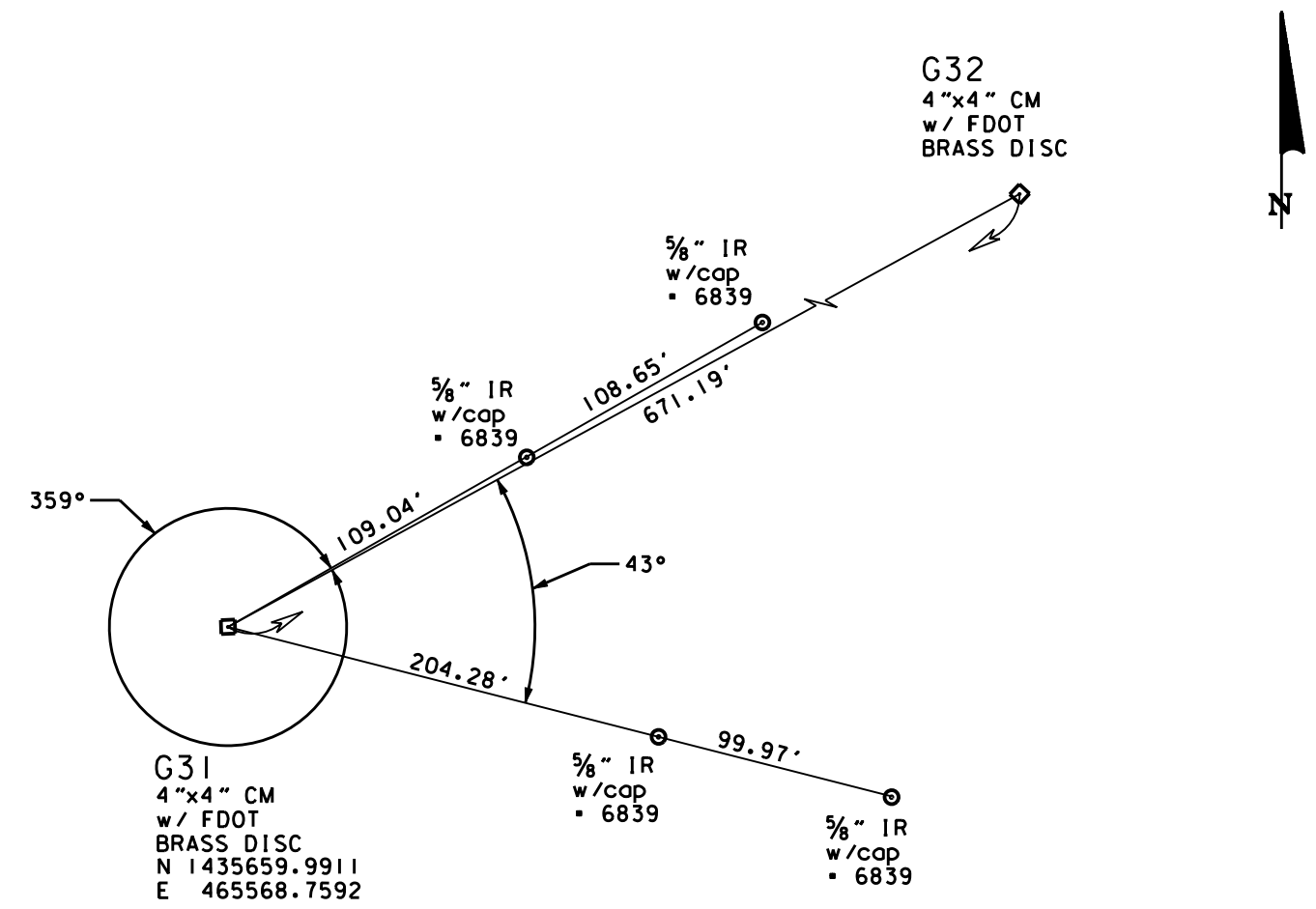
Control Point G25
STA. 150+48.63, offset 131.96' RT.
⊟ S.R. 429 (Western Beltway)



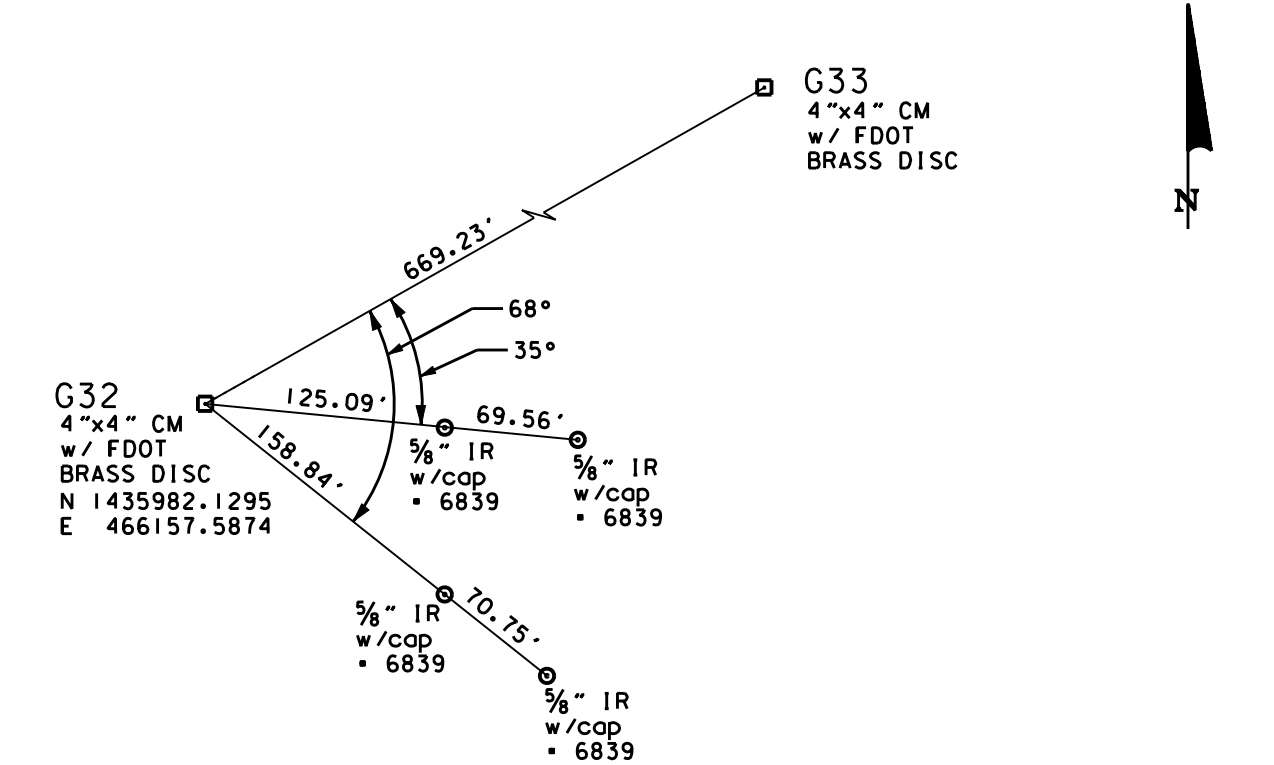
Control Point G29
STA. 92+95.84, offset 399.64' RT.
⊟ S.R. 400 (I-4)



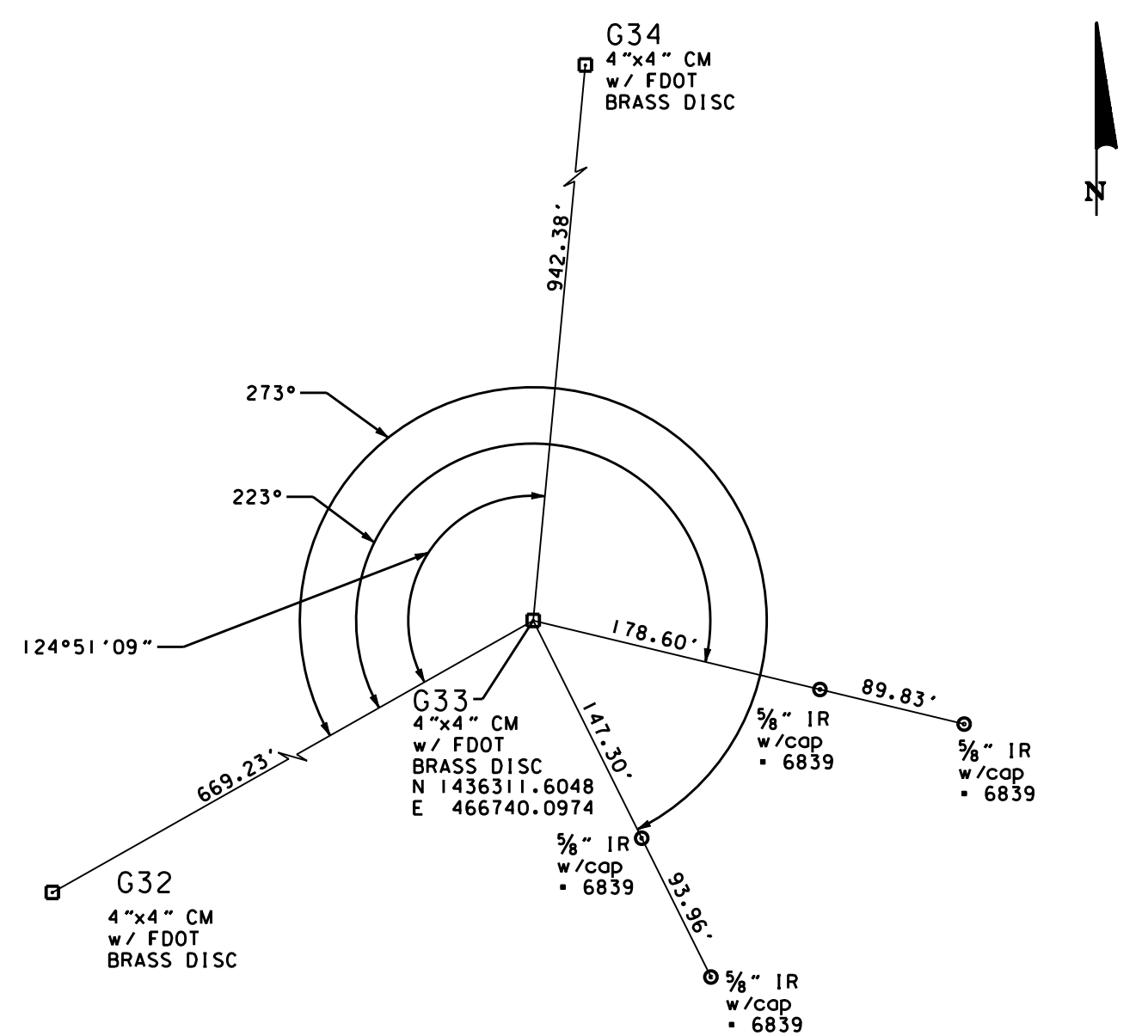
Control Point G30
STA. 101+93.29, offset 579.51' RT.
⊟ S.R. 400 (I-4)



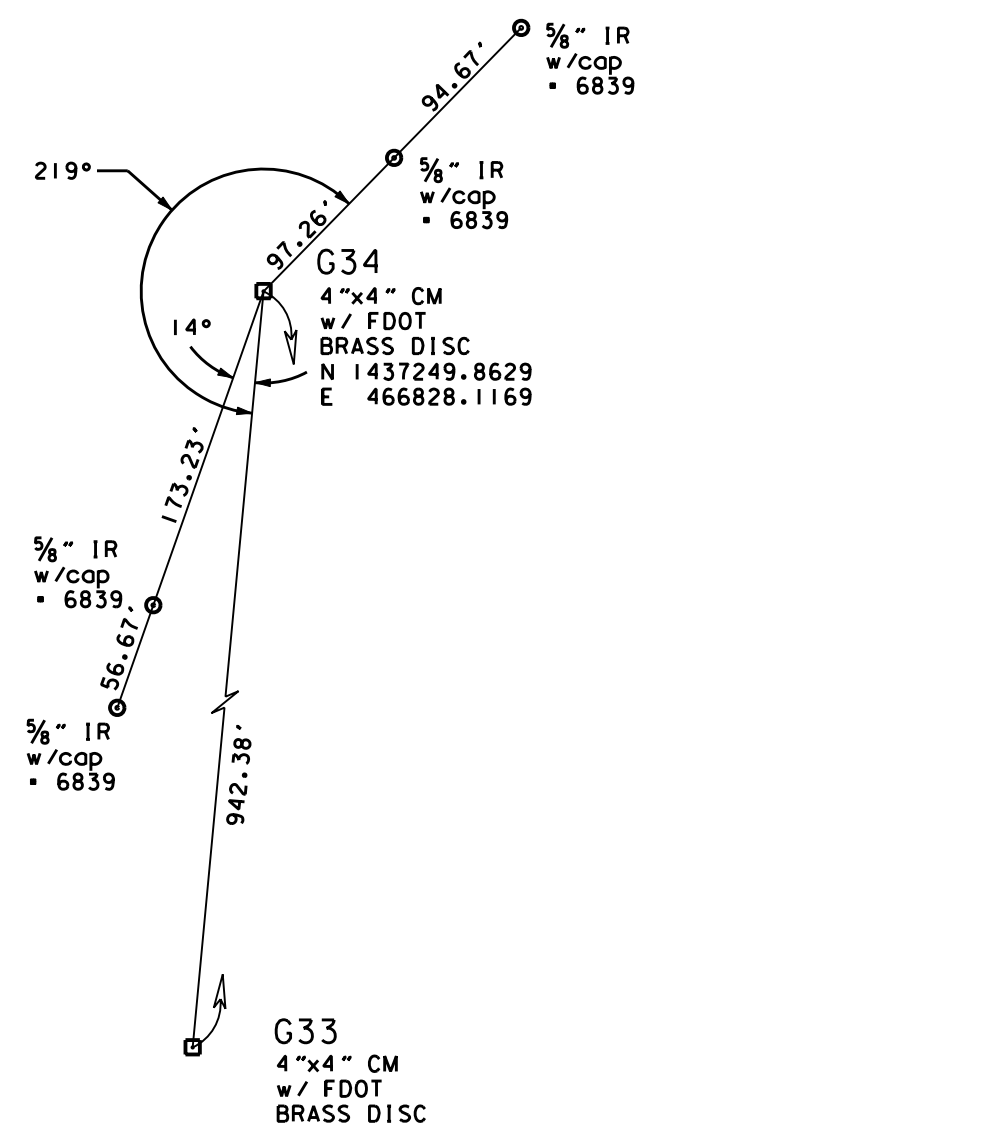
Control Point G31
STA. 108+85.84, offset 267.32' RT.
⊟ S.R. 400 (I-4)



Control Point G32
STA. 115+11.71, offset 509.76' RT.
⊟ S.R. 400 (I-4)



Control Point G33
STA. 121+39.12, offset 742.65' RT.
⊟ S.R. 400 (I-4)



Control Point G34
STA. 129+13.11, offset 205.04' RT.
⊟ S.R. 400 (I-4)

THIS MAP IS NOT A SURVEY

S.R. 429 (WESTERN BELTWAY) FROM S.R.400 (I-4) TO SANDHILL ROAD

RIGHT OF WAY MAP

FLORIDA DEPARTMENT OF TRANSPORTATION
RIGHT OF WAY MAPPING

APPROVED BY
ROBERT E. CHASON, JR.
TURNPIKE DISTRICT LAND SURVEYOR

DATE
11/27/00

REVISION	BY	DATE	REVISION	BY	DATE

	BY	DATE
PRELIM	E.METCALF	09/16/99
FINAL	E.METCALF	11/17/00
CHECKED	G.W.LUTES	11/17/00

F.A. PROJECT NO. N/A

STATE ROAD NO. 429

OSCEOLA COUNTY

MAPS PREPARED BY URS CORPORATION, SOUTHERN	FIELD BOOK NO.'S SEE GENERAL NOTE NO. 11, SHEET 1
W.P.I. NO. N/A	SCALE: N.T.S.
F.P. NO. 403497-2	SHEET 12 OF 13